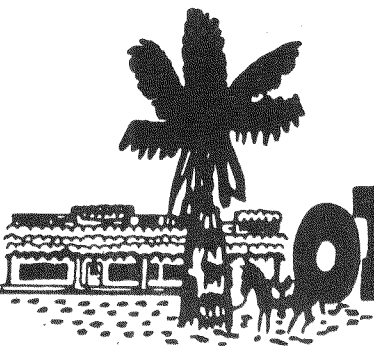
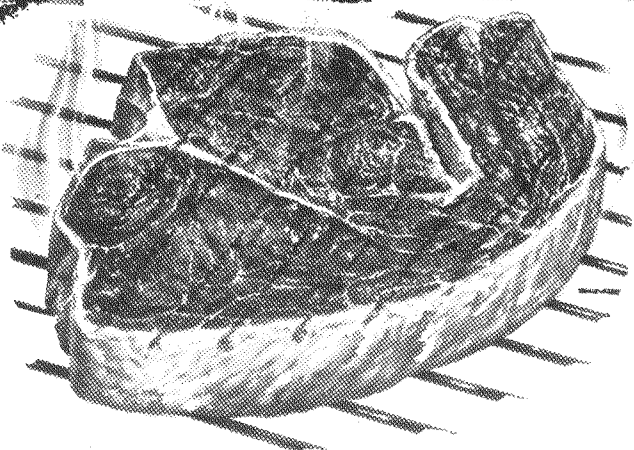


ROBERTS OF WOODSIDE



A TOWN MARKET PLACE • GROCERIES • PRODUCE • MEAT • DISTILLATES • FERMENTATIONS • HARDWARE • FEED & GRAIN
 3015 WOODSIDE ROAD, WOODSIDE, CALIFORNIA 94062 • 851-1511 • HOURS 8:30 A.M. TO 6:30 P.M.; 10:00 A.M. TO 6:00 P.M. ON SUNDAY



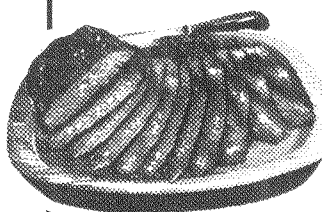
EXCEPTIONALLY AGED FOR FLAVOR AND TENDERNESS . . . U.S.D.A. CHOICE BEEF

T-BONE & PORTERHOUSE STEAK
\$1.69
 LB.

SMOKED PORK CHOPS CENTER CUTS—LB. \$1.39
 CHICKEN LEGS & THIGHS LB. 79¢

SHISH-KA-BOB

LEAN, TENDER CUBES
 U.S.D.A. CHOICE
 SPRING LAMB ... LB. **\$1.69** LB.



CUT THICK FOR B-B-Q
LONDON BROIL
 U.S.D.A. CHOICE BEEF **\$1.69** LB.



FRESH HEN
TURKEYS
 8 TO 14 LBS. **69¢**
 LB.

CAMBRIDGE SAUSAGE ALL PORK—LB. 69¢
 TURBOT FILLETS WHITE FISH—LB. 69¢

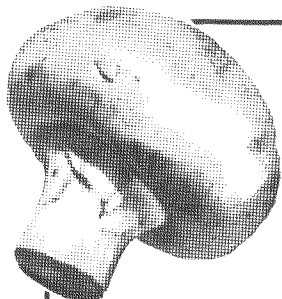
CLOSED MEMORIAL DAY MONDAY MAY 31st

YOUNG, SWEET, TENDER

CORN
10¢
 EAR

LARGE SIZE

- ARTICHOKES EA. 10¢
- BANANAS LB. 10¢
- CHERRIES LB. 59¢
- ICEBERG LETTUCE EACH 19¢
- CHERRY TOMATOES BKT. 29¢



MUSHROOMS
 ADDED TREAT FOR YOUR T-BONE OR PORTERHOUSE STEAK ... **69¢** LB.

